



# TAMAN LAVENDER

Let Life Blossom At Lavender Park

---

幸福生活 · 优雅盛开

---

Freehold

# Terrace Type A 双层排屋

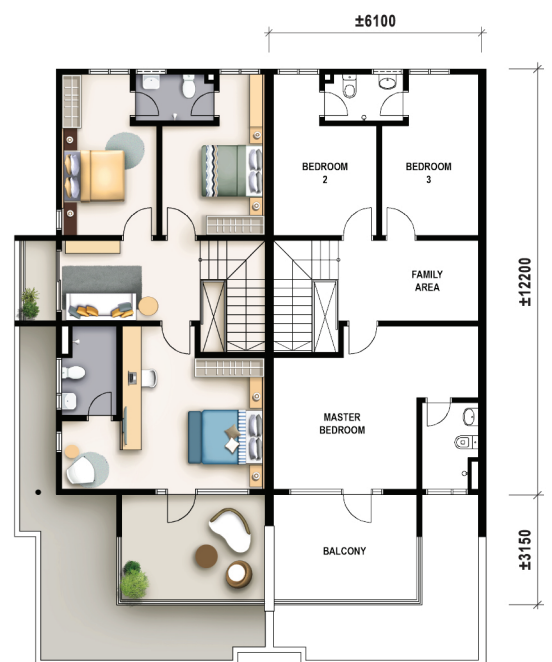


Land Size  
Approx. 20' x 60'

Built Up  
Approx. 20' x 40'



Ground Floor Plan  
Double Storey Terrace - Type A



1st Floor Plan  
Double Storey Terrace - Type A

# Terrace Type B 双层排屋



Land Size  
Approx. 20' x 56'

Built Up  
Approx. 20' x 36'



Ground Floor Plan  
Double Storey Terrace - Type B



1st Floor Plan  
Double Storey Terrace - Type B

# Site Plan



DOUBLE STOREY TERRACE ( TYPE A )

DOUBLE STOREY TERRACE ( TYPE B )





- Sustainable Home Features  
低碳/永续家居特色
- Low-VOC Paints  
采用低挥发性有机化合物，守护家人健康。
- Conduit Piping for Future Roof Solar Panel Installation  
预留太阳能管道，轻松升级太阳能板。
- Water-Efficient Fixtures And Fittings  
节水型卫浴装置。
- 13A Weatherproof Socket at Car Porch  
车廊设有13A防水插座。

#### SPECIFICATIONS

Structure	:	Reinforced Concrete Framework	
Brickwall	:	Cement Sand Bricks With Plastering	
Roofing	:	Concrete Roof Tiles	
Ceiling	:	Ground Floor	: Skim Coat To Soffit Of Floor Slab / Plaster Ceiling To Designated Area
	:	1st Floor / All Bathrooms	: Plaster Ceiling
Windows	:	Aluminium Framed Windows	
Doors	:	Main Entrance	: Decorative Door
	:	Rear Entrance	: Mild Steel Door
	:	Bathrooms	: PVC Door
	:	Bedrooms / Utility	: Flush Door
Locksets	:	Approved Locksets	
Floor Finishes	:	Living / Dining / Kitchen	: Tiles
	:	Staircase	: Tiles
	:	All Bedrooms / Family Area	: Tiles
	:	All Bathrooms	: Tiles
	:	Car Porch	: Tiles
	:	Balcony	: Tiles
Wall Finishes	:	Kitchen	: Tiles Laid Up To Approx. 1.5m Height From Finished Floor Level To Designated Area
	:	Bathrooms	: Tiles Laid Up To False Ceiling Height And On Exposed Surfaces Only
	:	Other Areas	: Plaster And Paint
Paint	:	Internal	: Emulsion Paint
	:	External	: Weather Resistant Paint

#### PALMINGTON SDN. BHD. DOUBLE STOREY TERRACE

		TYPE A		
		6.7m Width Corner / End Unit With Side Balcony (Plot 110, 160, 161, 195 & 196)	Corner Unit With Side Balcony	End / Typical Unit
Electrical	: Ceiling Fan Point	: 5 nos	5 nos	5 nos
Installations	: Lighting Point	: 23 nos	23 nos	21 nos
	: 13 Amp Power Point	: 18 nos	18 nos	18 nos
	: 15 Amp Aircond Point (Without Piping)	: 5 nos	5 nos	5 nos
	: 15 Amp Water Heater Point	: 3 nos	3 nos	3 nos
	: TV / Astro Point	: 2 nos	2 nos	2 nos
	: Fibre Wall Socket	: 1 no	1 no	1 no
	: Bell Point	: 1 no	1 no	1 no
	: Gate Light Point	: 2 nos	2 nos	2 nos
	: Autogate Point (Without Fitting)	: 1 no	1 no	1 no
Sanitary	: Pedestal WC	: 3 nos	3 nos	3 nos
Installations	: Shower Rose	: 3 nos	3 nos	3 nos
	: Wash Basin	: 3 nos	3 nos	3 nos

		TYPE B	
		6.7m Width Corner Unit (Plot 25, 26, 44, 45, 57 & 71)	Corner / End / Typical Unit
		5 nos	5 nos
		21 nos	21 nos
		18 nos	18 nos
		5 nos	5 nos
		3 nos	3 nos
		2 nos	2 nos
		1 no	1 no
		1 no	1 no
		2 nos	2 nos
		1 no	1 no
		3 nos	3 nos
		3 nos	3 nos
		3 nos	3 nos



- ON-GOING PROJECTS
- COMPLETED PROJECTS

## PEARL CITY MASTER PLAN



**PALMINGTON SDN. BHD.** 201001007619 (892241-W)  
 (A SUBSIDIARY COMPANY OF TAMBUN INDAH LAND BERHAD) 200801009158 (810446-U)  
 12-01, Penthouse Wisma Pantai, Jalan Wisma Pantai, Kampung Gajah, 12200 Butterworth.  
 T: 04-324 0088 F: 04-324 0099  
 Email: sales@tambunindah.com

**04-501 0088**

**04-324 0088**

012-400 2380

012-477 5380

012-466 7380

012-694 5380

012-440 9380

012-548 5380

[www.pearlcity.com.my](http://www.pearlcity.com.my)

[www.tambunindah.com](http://www.tambunindah.com)

**TAMAN LAVENDER** Nama Pemaju : Palmington Sdn. Bhd. 201001007619 (892241-W) | No. Lesen Pemaju : 11882/01-2029/1470(A) | Tempoh Sah : 20/01/2024 - 19/01/2029 | No. Permit Iklan dan Jualan : 11882-28/11-2027/0965(A)-(L) | Tempoh Sah : 14/11/2025 - 13/11/2027 | Nama Pihak Berkuasa yang Meluluskan Pelan Bangunan : Majlis Bandaraya Seberang Perai | No. Ruj Pelan Bangunan : MBSP/40/20-75/85(12) & MBSP/40/20-75/85(PR1)(27) | Rumah Teres 2 Tingkat (Jenis A) | Bil. Unit : 114 Unit | Harga Jualan : RM754,000(min) - RM917,000(max) | Rumah Teres 2 Tingkat (Jenis B) | Bil. Unit : 90 Unit | Harga Jualan : RM693,000(min) - RM906,000(max) | Tarikh Pemajuan Perumahan Dijangka Stap : Oct 2027 | Bebanan Tanah : Tiada | Sekatan Kepentingan Tanah : Tiada | Jenis Pengangan Tanah : Hakmilik Kekal | 5% Diskaun untuk Bumiputera

**IKLAN INI TELAH DILULUSKAN OLEH JABATAN PERUMAHAN NEGARA. MAKLUMAT PEMAJUAN DAN IKLAN YANG DILULUSKAN BOLEH DISEMAK DI PORTAL TEDUH.KPKT.GOV.MY**